



WELCOME!

Troy Mobility Plan Open House #1

- Look at the presentation boards at your own pace
- Listen to the presentation at 6:30 p.m.
- Tell us what you think:

- ➔ **Discuss** your ideas and concerns with us
- ➔ **Write comments on the Post-It® notes** provided at each station and stick them on the boards
- ➔ **Complete a survey—**either here on paper or at home online (www.TroyMobility.com)



Project Purpose

To develop recommendations aimed at:

- Improving traffic flow
- Expanding parking
- Enhancing safety for motorists, pedestrians, and bicyclists
- Coordinating all modes of transportation

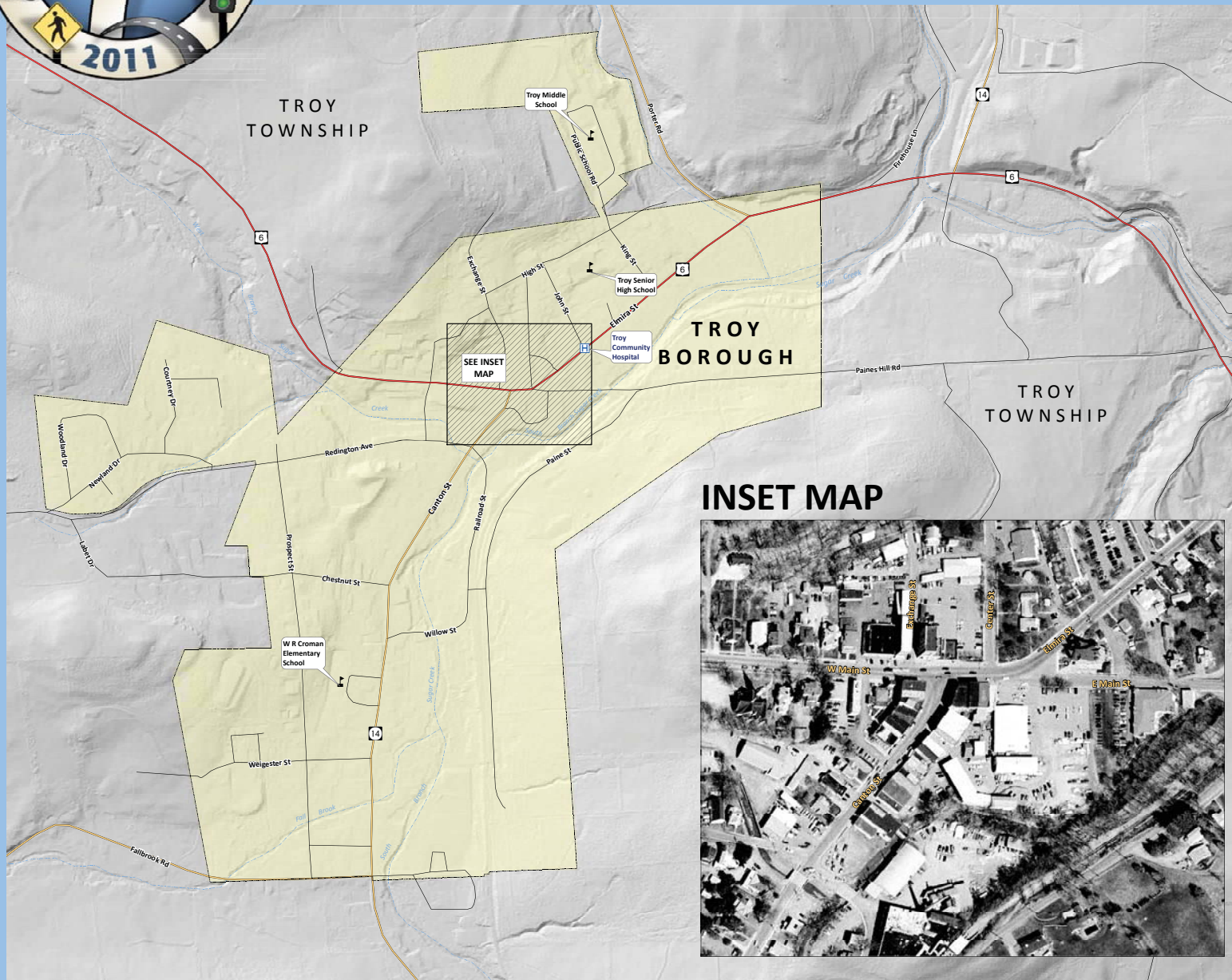


Purpose of this Meeting

- Introduce the project and study team
- Listen to your ideas and concerns
- Present study area information related to transportation



STUDY AREA MAP



INSET MAP



Where are the worst intersections?

Where are difficult spots for pedestrians?

Where is congestion the biggest issue?

*Take a Post-It note, write your thoughts, and stick it on the board.
Go ahead!*

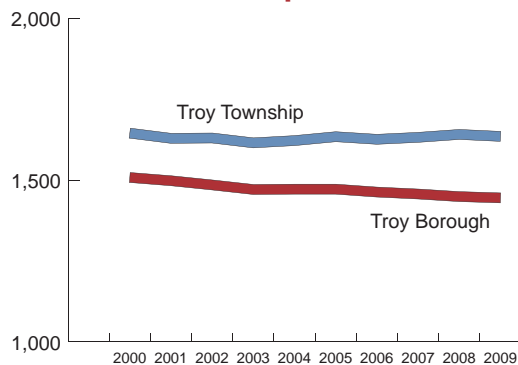




DEMOGRAPHICS

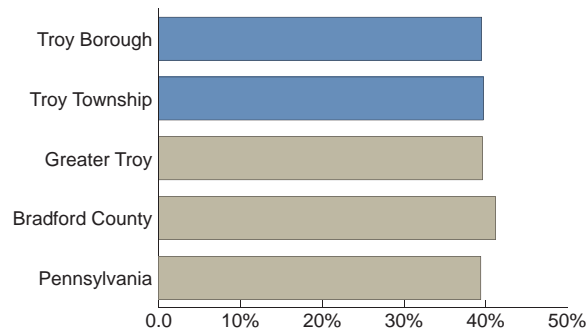
Changes in population and employment affect traffic congestion and other aspects of transportation.

Population Trends



The borough's population has declined slightly, while the township's population has remained fairly steady.

Percent of "Dependent" Population



Nearly 40 percent of the borough's population is under age 18 or older than age 65.

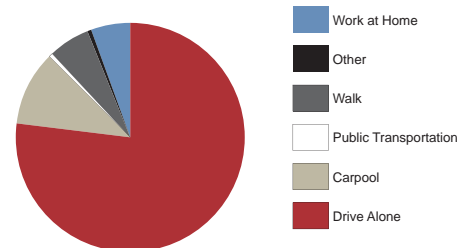
This group consists of many non-drivers who need safe options for walking and bicycling and convenient public transportation.

Where We Work

Destination Municipality	Number of Workers
1. Troy Borough	274
2. West Burlington Township	47
3. Towanda Borough	31
4. Elmira, New York	26
5. Canton Borough	23
6. Wysox Borough	19
7. Horseheads, New York	17
8. Mansfield Borough	17
9. Canton Township	15
10. Sayre Borough	15

Most Troy area residents work in the borough, but many others travel quite a distance for work.

How We Get to Work



77% of workers drive alone to work.

What do you think all this means for our roads, sidewalks, and EMTA?

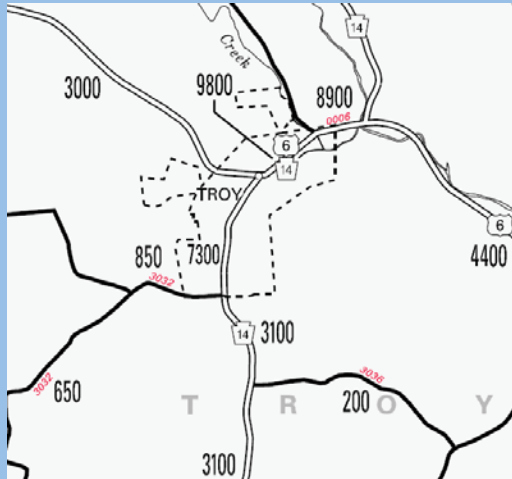
Take a Post-It note, write your thoughts, and stick it on the board. Go ahead!





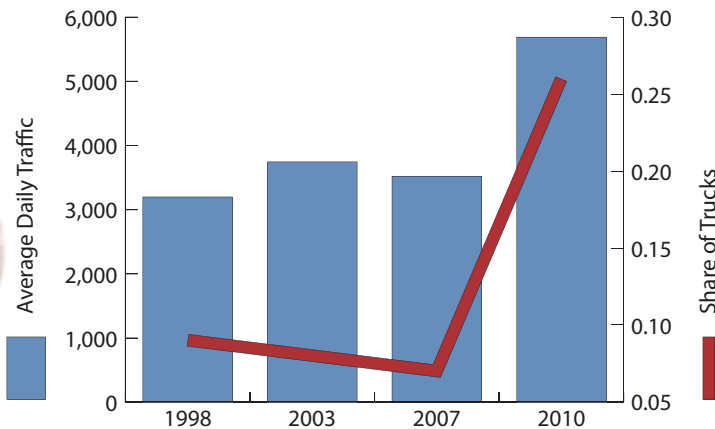
ROADWAYS AND TRAFFIC

Troy Borough has more than 7 miles of roadway, and as we all know, traffic has increased sharply in the last few years.



Area Traffic Volumes

Labels show number of vehicles per day on that stretch of roadway



Where is the traffic increase most noticeable?

Take a Post-It note, write your thoughts, and stick it on the board. Go ahead!

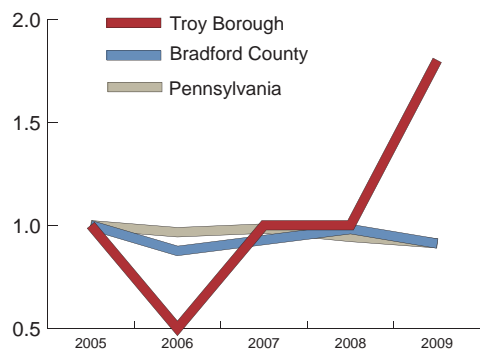




CRASHES

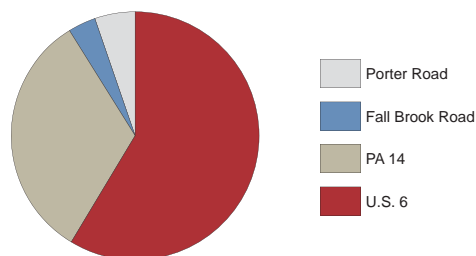
There are about 13 “reportable” crashes in Troy each year.
Reportable crashes are more serious—someone was hurt and/or a vehicle was damaged enough it couldn't be driven from the scene.

Total Crashes as a Percent of 2005 Values



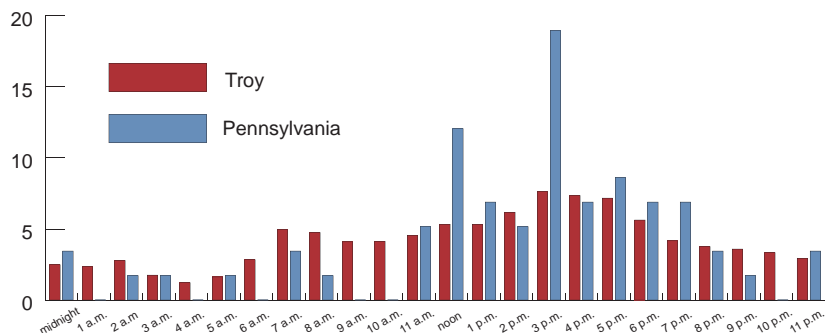
Troy's crash rate is higher than that of Bradford County or Pennsylvania.

Crash Locations



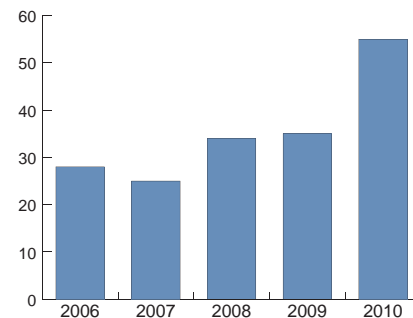
Most crashes happen on Route 6.

Crashes by Time of Day



The lunch hour and after school are the most likely times for a crash.

Non-Reportable Crashes



Fender-benders have also increased.

Where do you see the most crashes or close calls?

Take a Post-It note, write your thoughts, and stick it on the board. Go ahead!





PEDESTRIAN SAFETY

A walking safety audit identified several issues with crosswalks, sidewalks, and signs. Do you recognize any of these?



Crosswalk on U.S. 6 without proper signing



Steps on High Street not ADA-compliant



Open drainage ditches on Redington Avenue



Crosswalk is not ADA-compliant



Sidewalk on Prospect directs pedestrians into the street



Sidewalk in poor condition on Redington Avenue

In what other locations do sidewalks, crosswalks, and signs need improvement for pedestrian safety?

Take a Post-It note, write your thoughts, and stick it on the board. Go ahead!





MOTORIST SAFETY

*Faded or incorrect road signs, inadequate sight distance, and improper use of guide rail are all safety concerns.
Do you recognize any of these?*



Faded No Parking sign on Exchange Street is not of breakaway design



School crossing signs on U.S. 6 should be fluorescent yellow-green



Confusing sign near Willow Street stop sign should be removed



Outdated school sign on Paine Street



Faded sign on High Street can lead to motorists going the wrong way



Sight distance is a concern at U.S. 6 and East Main Street

What other road signs need improvement?
Where is it hard to see to pull out into traffic?

Take a Post-It note, write your thoughts, and stick it on the board. Go ahead!

